

Light My Bricks

LEGO Tree House 21318 Light Kit Installation Guide



Hello, we're Light My Bricks.

We're here to help you get started on the LEGO Tree House (21318) Lighting Kit.

This PDF lists instructions for the LED light kit only.

If you run into any issues, please refer to the troubleshooting section towards the end of this guide.

Have fun and enjoy!



PACKAGE CONTENTS:

- 3 × Warm White Strip Lights
- 8 × White 15cm Bit Lights
- 3 × White 30cm Bit Lights
- 1 × Cool White 30cm Bit Light
- 2 × Blue 30cm Bit Lights
- 1 × 8-Port Expansion Board
- 1 × 12-Port Expansion Board
- 1 × Flicker Effects Board
- 1 × 5cm Connecting Cable
- 3 × 15cm Connecting Cables
- 2 × 30cm Connecting Cables
- 6 × Adhesive Squares
- 1 × USB Power Cable

RGB COMPONENTS:

- 1 × RGB Remote Control
- 1 × RGB Control Board
- 5 × RGB Strip Lights
- 5 × RGB 15cm Connecting Cables

LEGO PIECES:

- 1 × Trans Orange Round Plate 1×1
- 2 × Trans Clear Plate w Rounded Bottom 2×2
- 3 × Trans Clear Plate 1x1

Contents

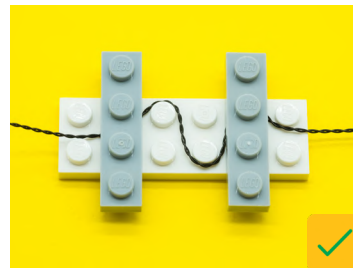
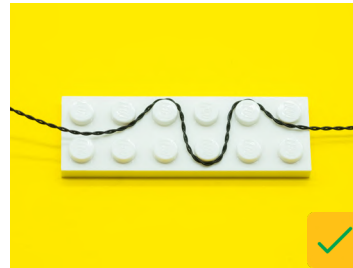
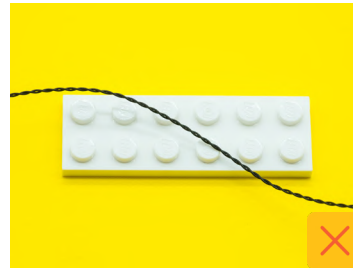
- 4. Before You Begin
- 30. Final product
- 31. Troubleshooting
- 36. Contact

Before You Begin

LAYING CABLES IN BETWEEN AND UNDERNEATH BRICKS

Cables can fit in between and underneath LEGO® bricks, plates, and tiles providing they are laid correctly between the LEGO® studs. Do NOT forcefully join LEGO® together around cables; instead ensure they are laying comfortably in between each stud.

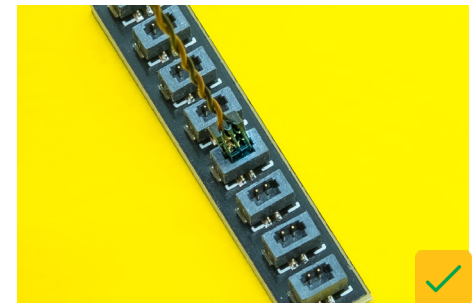
CAUTION: Forcing LEGO® to connect over a cable can result in damaging the cable and light.



CONNECTING CABLE CONNECTORS TO EXPANSION BOARDS

Take extra care when inserting connectors to ports of Expansion Boards. Connectors can be inserted only one way. With the expansion board facing up, look for the soldered "=" symbol on the left side of the port. The connector side with the wires exposed should be facing toward the soldered "=" symbol as you insert into the port. If a plug won't fit easily into a port connector, do not force it.

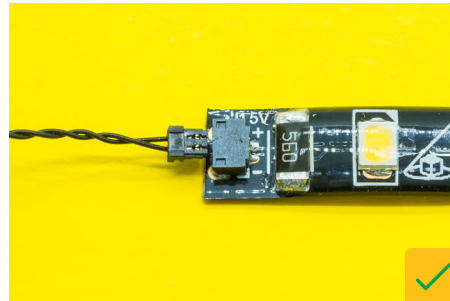
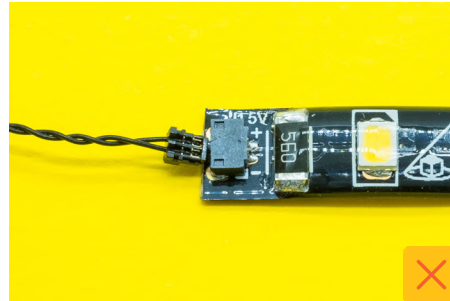
Incorrectly inserting the connector can result in bent pins inside the port or possible overheating of the expansion board when connected.



Before You Begin

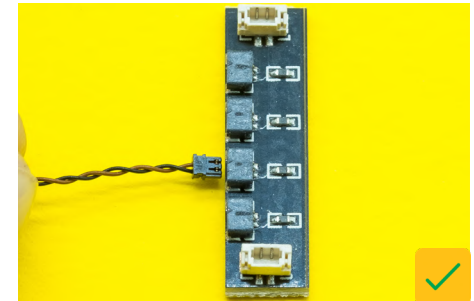
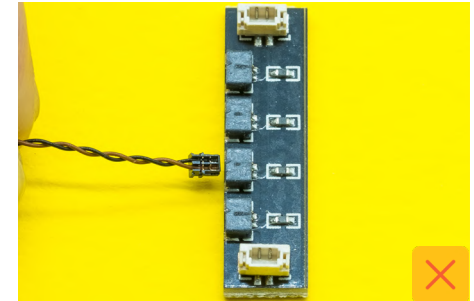
CONNECTING CABLE CONNECTORS TO STRIP LIGHTS

Take extra care when inserting connectors to ports on the Strip Lights. Connectors can be inserted only one way. With the Strip Light facing up, ensure the side of the connector with the wires exposed is facing down. If a plug won't fit easily into a port connector, don't force it. Doing so will damage the plug and the connector.



CONNECTING MICRO CABLE CONNECTORS TO MICRO EXPANSION BOARD PORTS

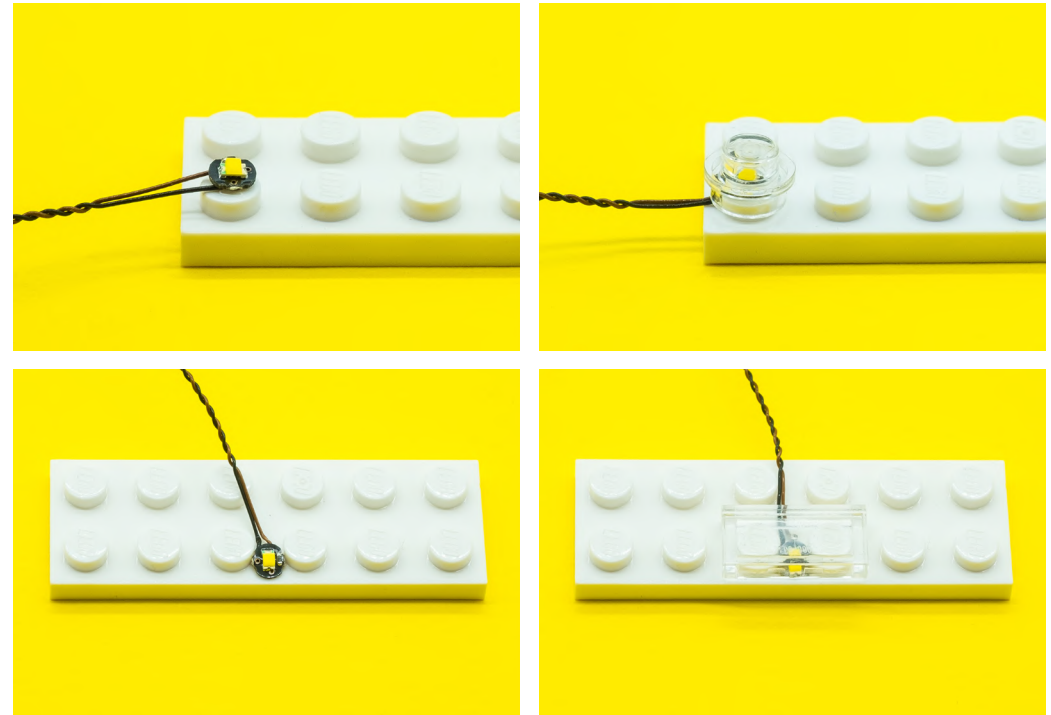
Take extra care when inserting the micro connectors to micro ports of Micro Expansion Boards. Connecting Micro Bit Lights to Micro Expansion Boards is similar to connecting lights and cables to Strip Lights. With the expansion board facing up, ensure the side of the connector with the wires exposed is facing down. If a plug won't fit easily into a port connector, do not force it. Use your fingernail to push the plastic part of the connector to the micro port.



Before You Begin

INSTALLING BIT LIGHTS UNDER LEGO® BRICKS AND PLATES

When installing Bit Lights under LEGO® pieces, ensure they are placed the correct way up (Yellow LED component exposed). You can either place them directly on top of LEGO® studs or in between.



Instructions

To ensure a smooth installation of your light kit, please read and follow each step carefully. If you run into any issues, please refer to the online troubleshooting guide.



Wenn Sie Probleme mit Ihrem Light My Bricks-Set haben, sehen Sie sich unser Video zur Fehlerbehebung an oder lesen Sie die Auflistung der häufigsten Ursachen, die Ihnen bei der Fehlersuche helfen hier.



Si vous rencontrez des problèmes avec votre kit Light My Bricks, regardez notre vidéo de dépannage ou consultez la liste des causes les plus fréquentes pour vous aider à les résoudre ici.



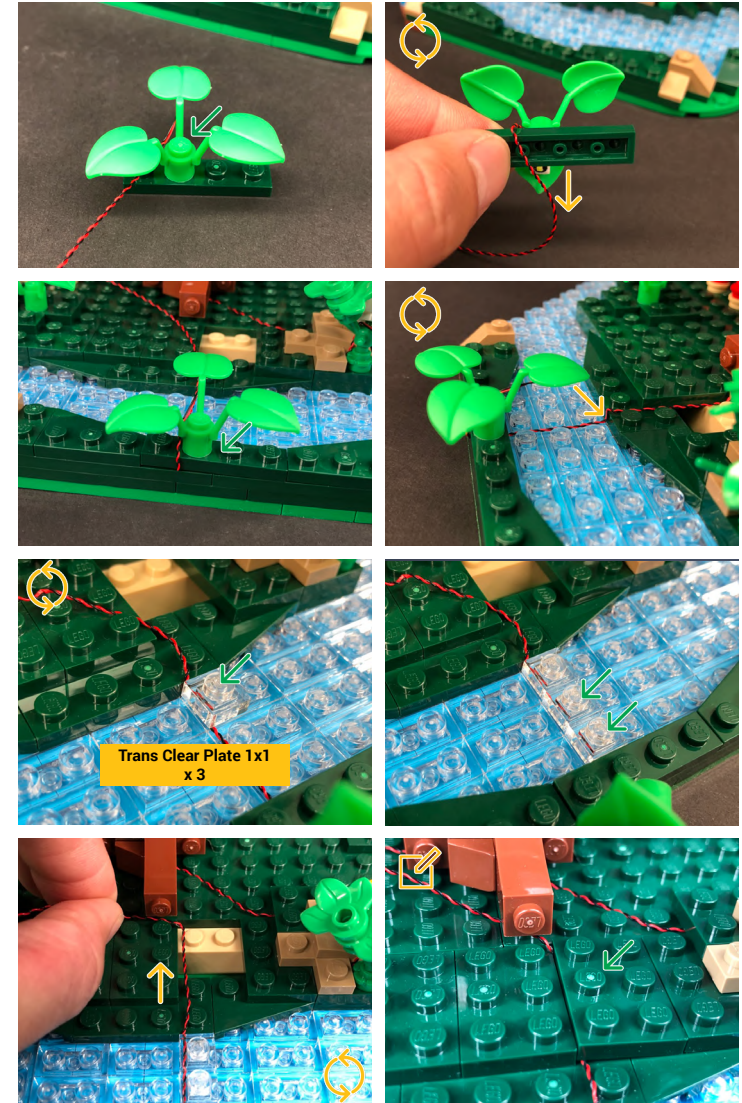
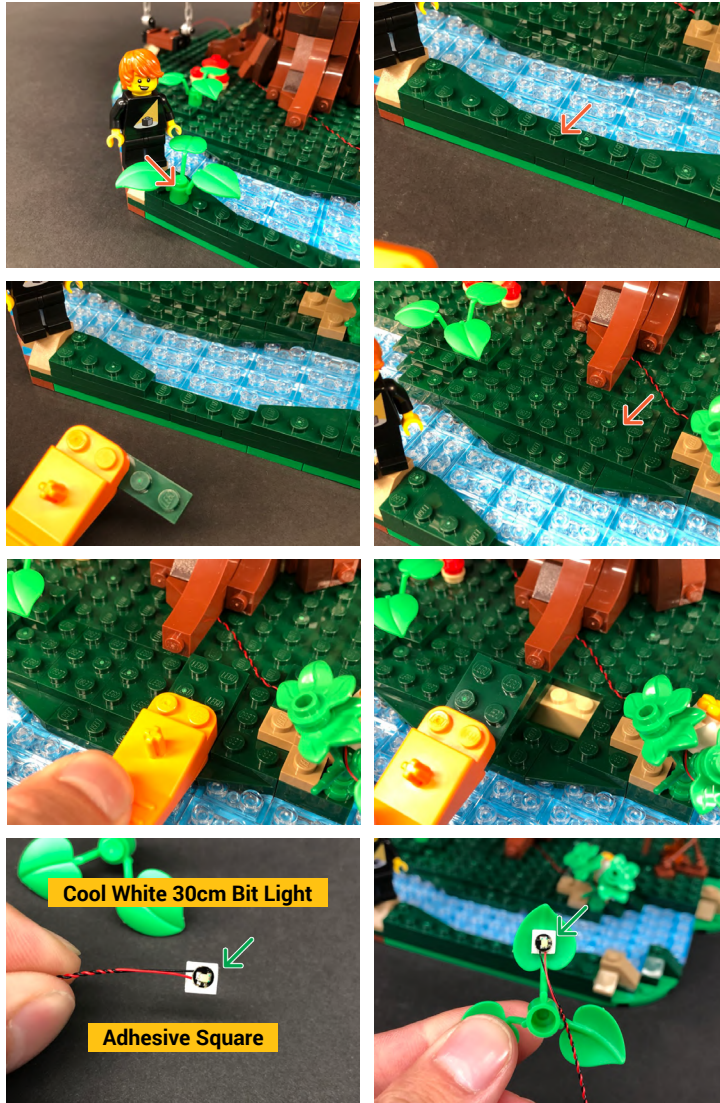
Se si verificano problemi con il set Light My Bricks, guardare il nostro video per la risoluzione dei problemi o leggere l'elenco delle cause più comuni per la risoluzione dei problemi qui.

1



LEGEND: | ← DISCONNECT | ← CONNECT / RECONNECT | ↻ TURN / FLIP | → DIRECTIONAL | ↻ TWIST / BRAID | ☀ POWER ON / TEST

2



Do NOT forcefully connect the plate completely where the cable is in the top left corner. Doing so will snap the cable. The plate should be completely connected where the right studs are, and partially connected where the left studs are.

3



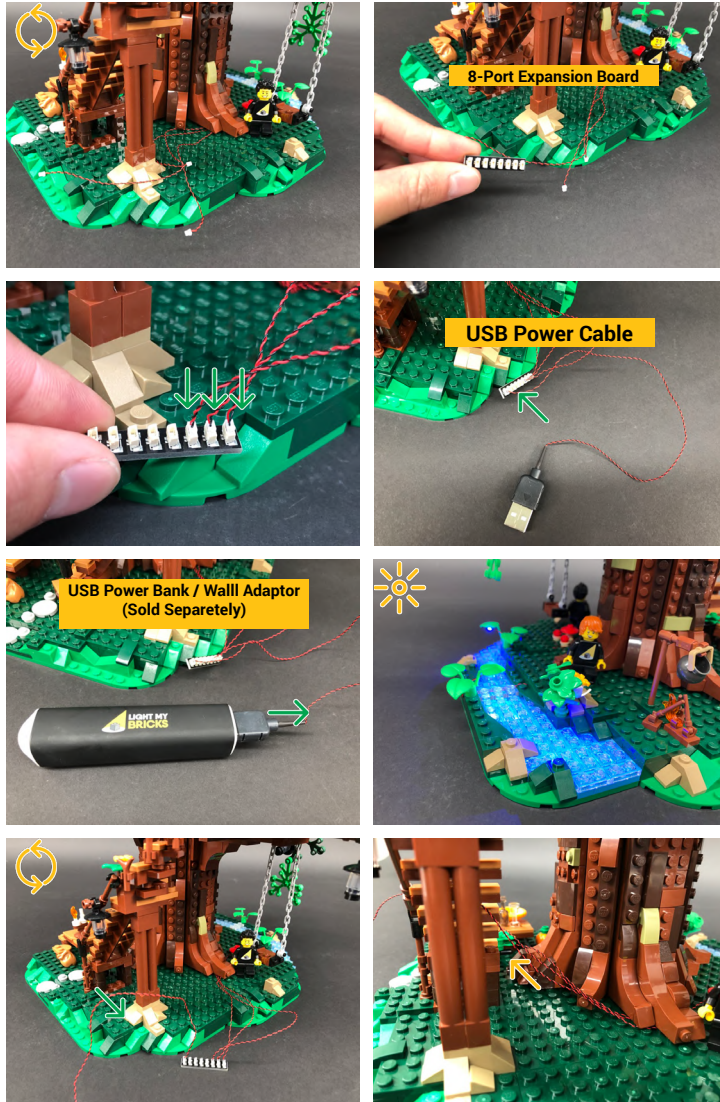
Blue 30cm Bit Light

Adhesive Square

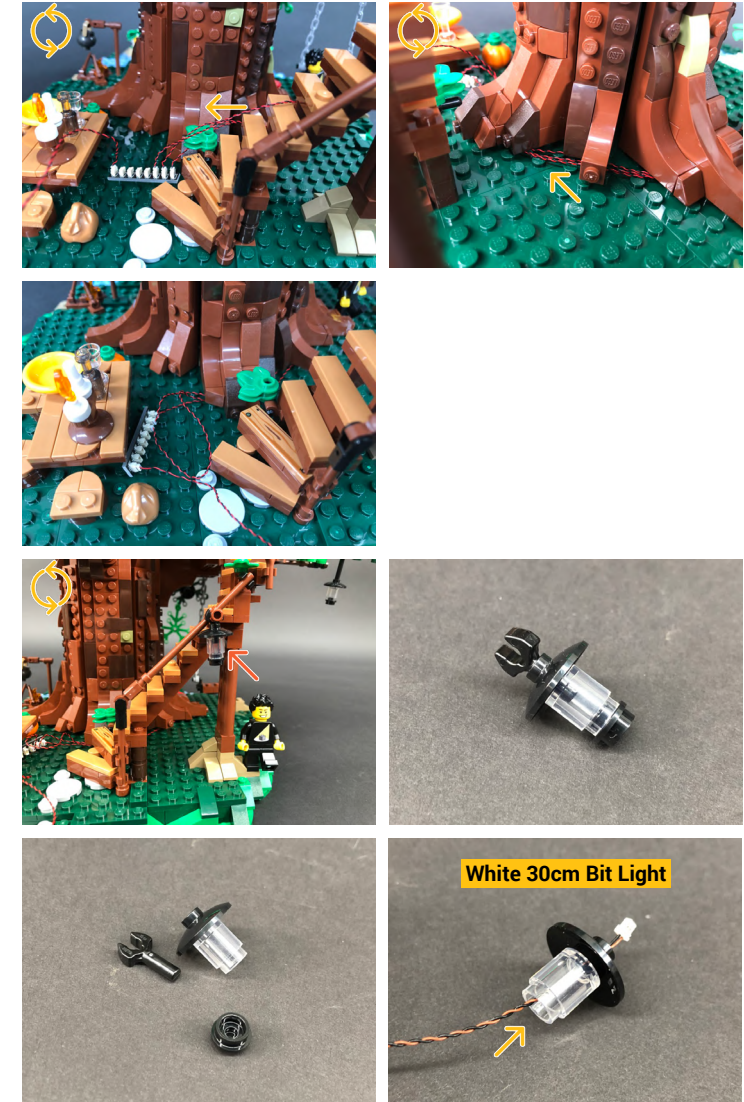


LEGEND: | DISCONNECT | CONNECT / RECONNECT | TURN / FLIP | DIRECTIONAL | TWIST / BRAID | POWER ON / TEST

4




5



If you experience any issues with the lights not working and suspect an issue with a component, please try a different port on the expansion board to verify where the fault lies (with the light or expansion board). To correct any issues with expansion board ports, please view the section addressing expansion board issues on our online troubleshooting guide.

LEGEND: |  DISCONNECT |  CONNECT / RECONNECT |  TURN / FLIP |  DIRECTIONAL |  TWIST / BRAID |  POWER ON / TEST

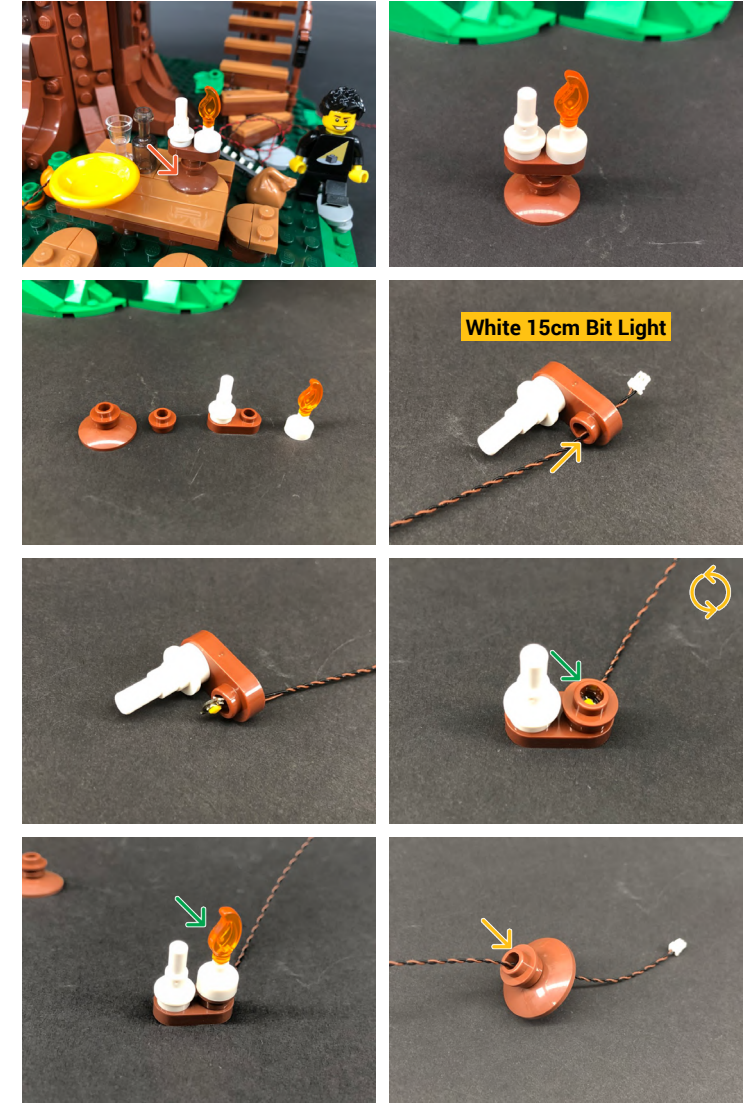


 Important Note – Do NOT forcefully push the black clip all the way through as doing this may break the cable.

6



7



LEGEND: | ← DISCONNECT | → CONNECT / RECONNECT | ↻ TURN / FLIP | → DIRECTIONAL | ↻ TWIST / BRAID | ☀ POWER ON / TEST

8



If you experience any issues with the lights not working and suspect an issue with a component, please try a different port on the expansion board to verify where the fault lies (with the light or expansion board). To correct any issues with expansion board ports, please view the section addressing expansion board issues on our online troubleshooting guide.

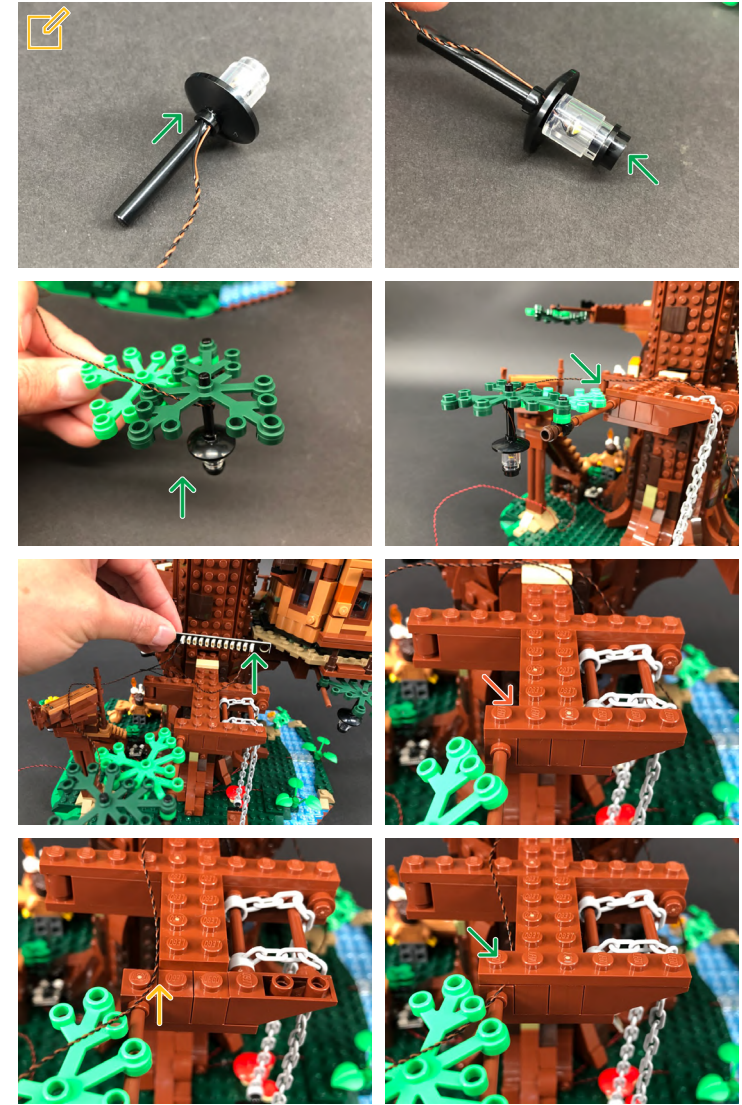
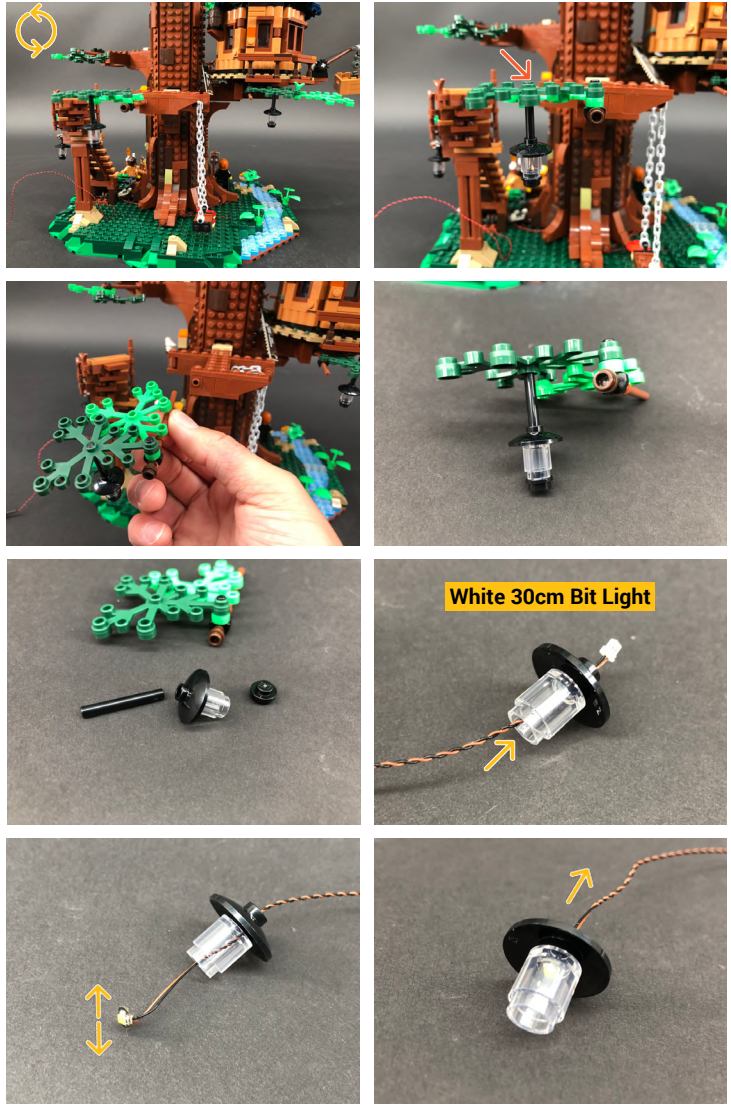
9



LEGEND: | DISCONNECT | CONNECT / RECONNECT | TURN / FLIP | DIRECTIONAL | TWIST / BRAID | POWER ON / TEST

LEGEND: |  DISCONNECT |  CONNECT / RECONNECT |  TURN / FLIP |  DIRECTIONAL |  TWIST / BRAID |  POWER ON / TEST

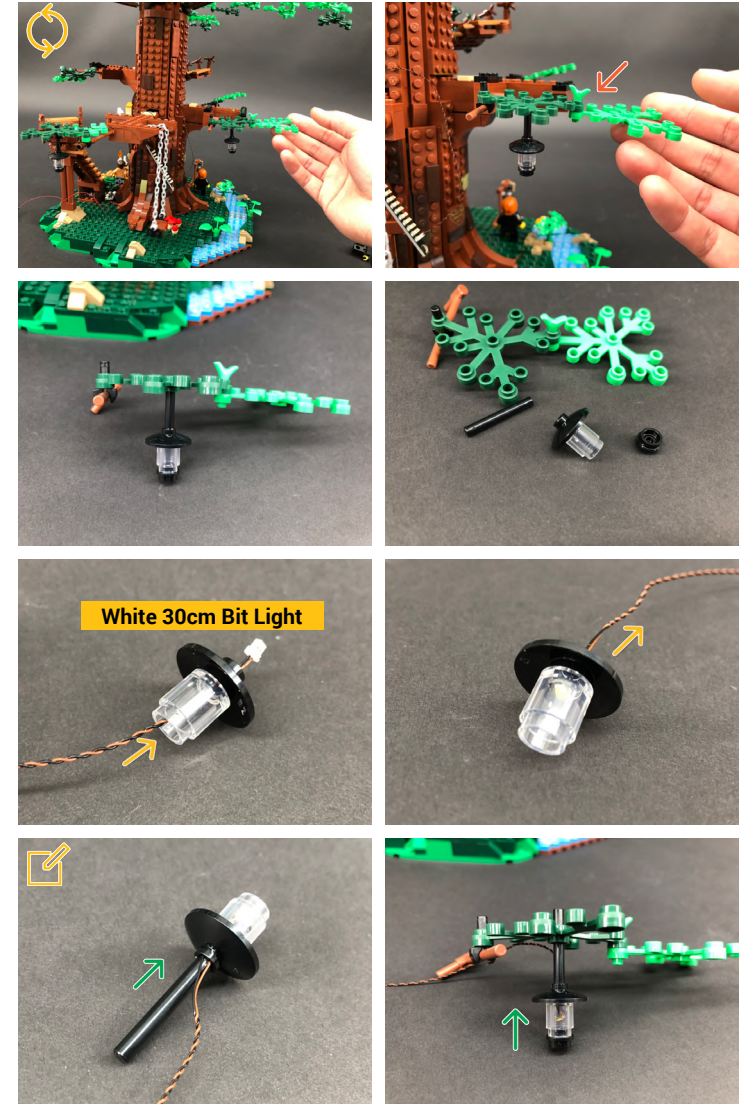
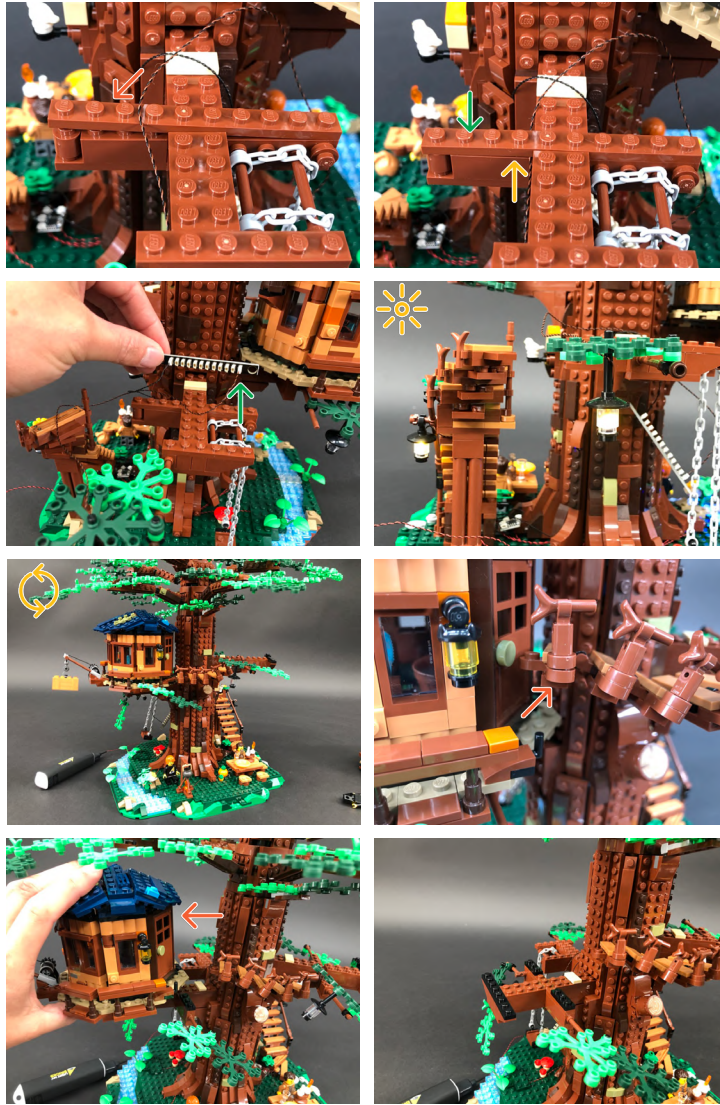
10



 Important Note – Do NOT forcefully push the black clip all the way through as doing this may break the cable.

LEGEND: | DISCONNECT | CONNECT / RECONNECT | TURN / FLIP | DIRECTIONAL | TWIST / BRAID | POWER ON / TEST

11

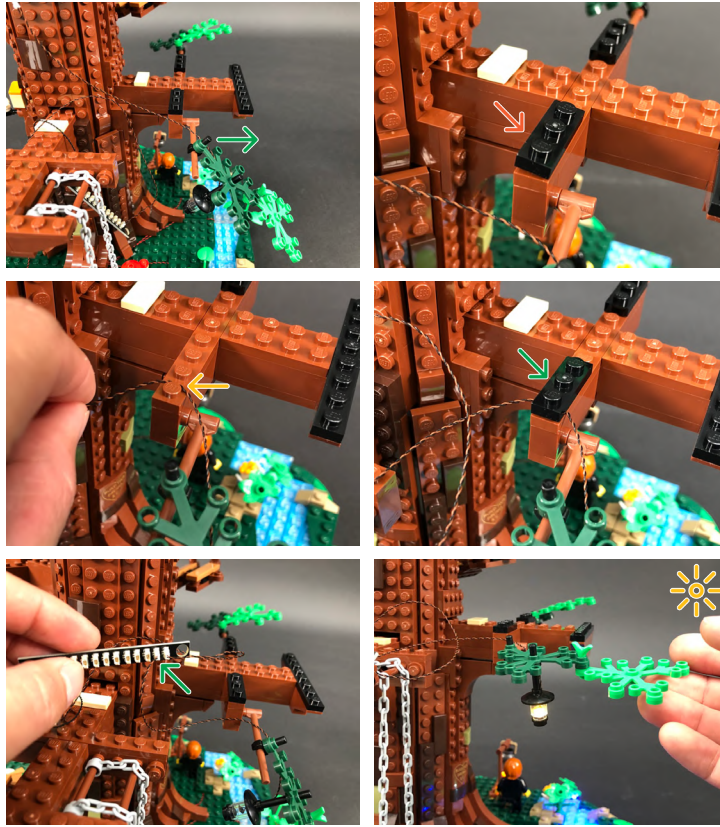


White 30cm Bit Light

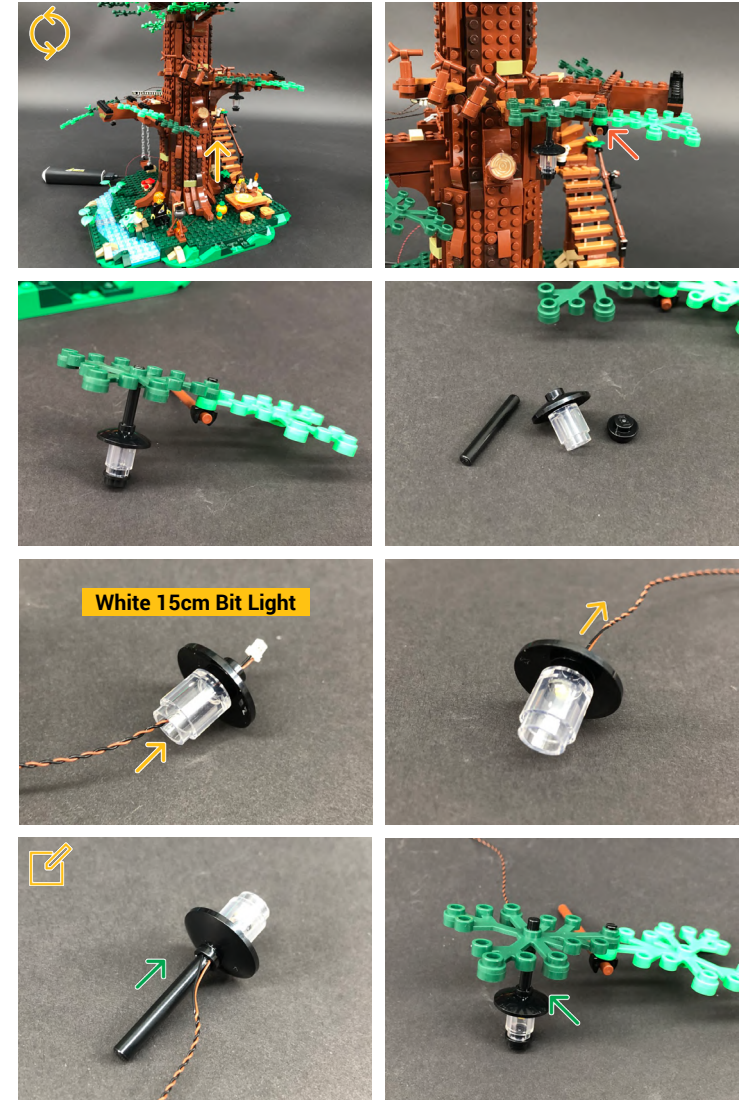
Important Note – Do NOT forcefully push the black clip all the way through as doing this may break the cable.

If you experience any issues with the lights not working and suspect an issue with a component, please try a different port on the expansion board to verify where the fault lies (with the light or expansion board). To correct any issues with expansion board ports, please view the section addressing expansion board issues on our online troubleshooting guide.

LEGEND: | DISCONNECT | CONNECT / RECONNECT | TURN / FLIP | DIRECTIONAL | TWIST / BRAID | POWER ON / TEST



12



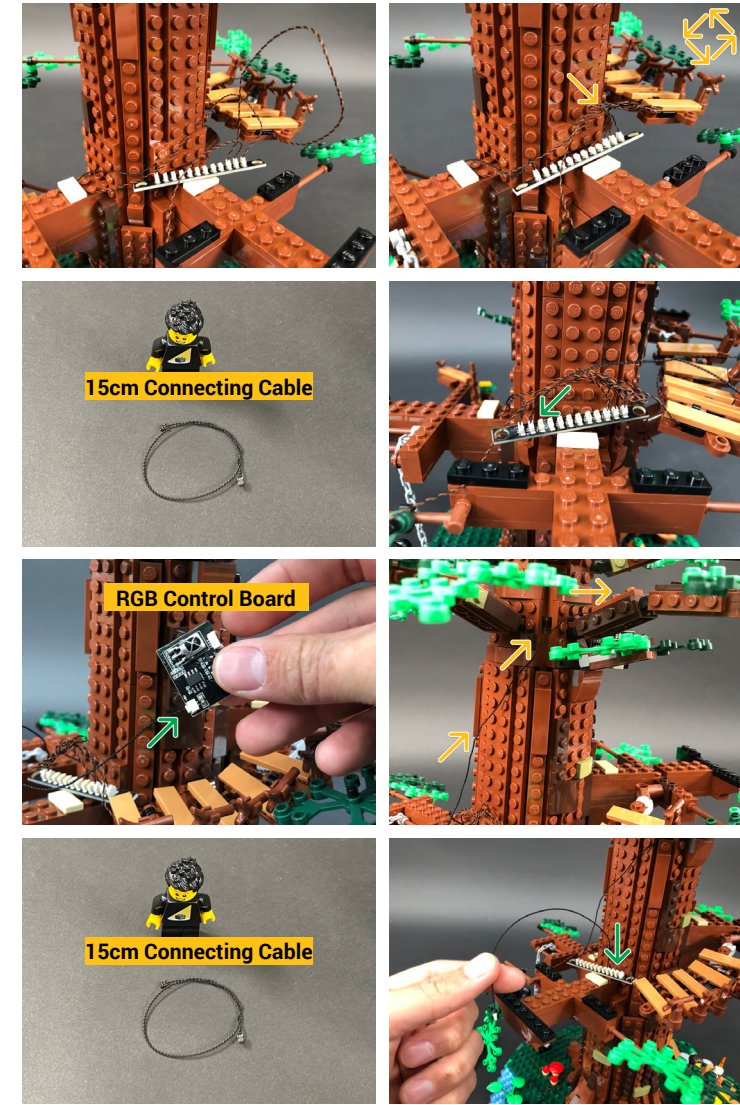
Important Note – Do NOT forcefully push the black clip all the way through as doing this may break the cable.

If you experience any issues with the lights not working and suspect an issue with a component, please try a different port on the expansion board to verify where the fault lies (with the light or expansion board). To correct any issues with expansion board ports, please view the section addressing expansion board issues on our online troubleshooting guide.

LEGEND: | DISCONNECT | CONNECT / RECONNECT | TURN / FLIP | DIRECTIONAL | TWIST / BRAID | POWER ON / TEST

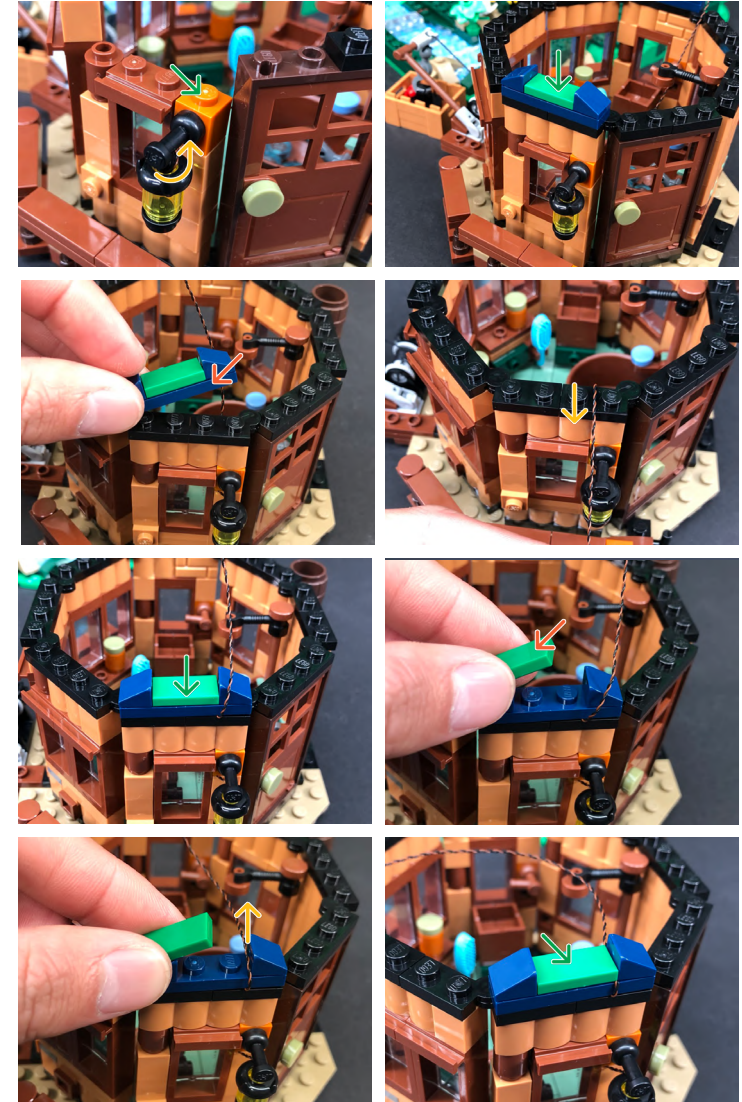
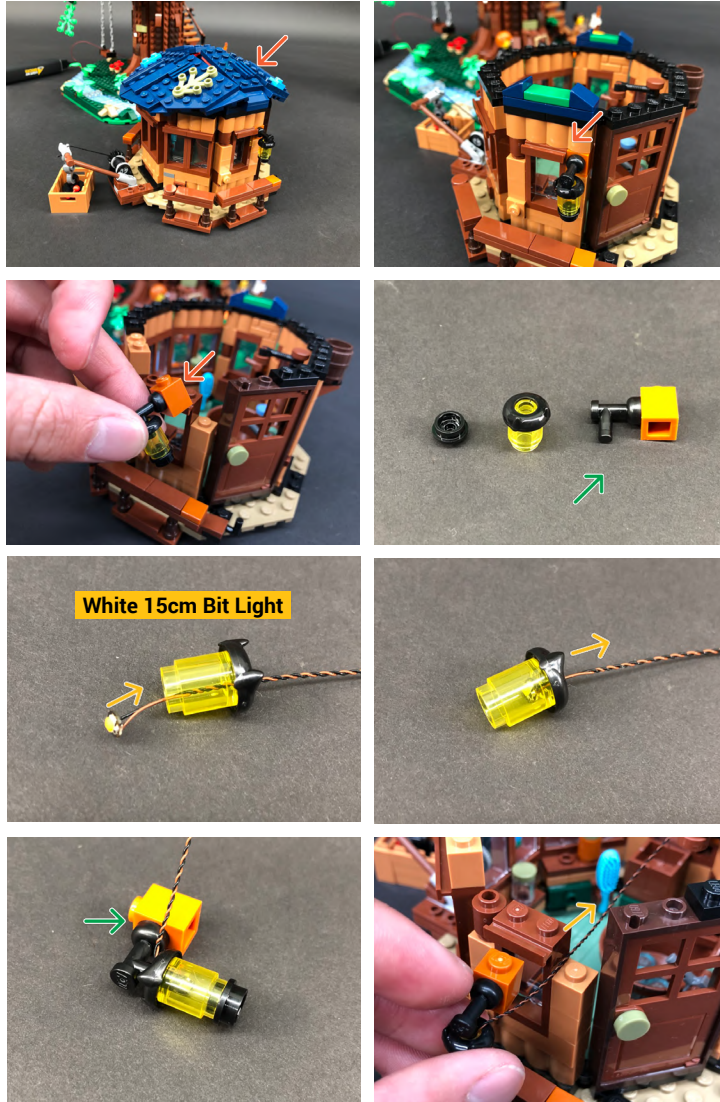


13



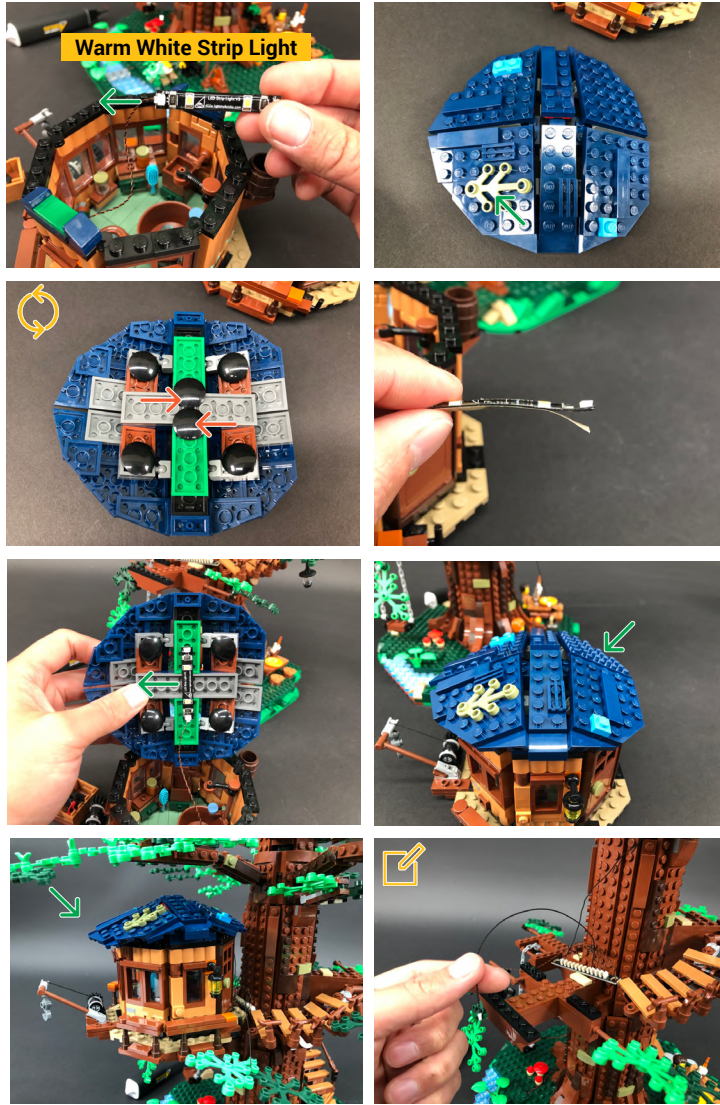
If you experience any issues with the lights not working and suspect an issue with a component, please try a different port on the expansion board to verify where the fault lies (with the light or expansion board). To correct any issues with expansion board ports, please view the section addressing expansion board issues on our online troubleshooting guide.

14



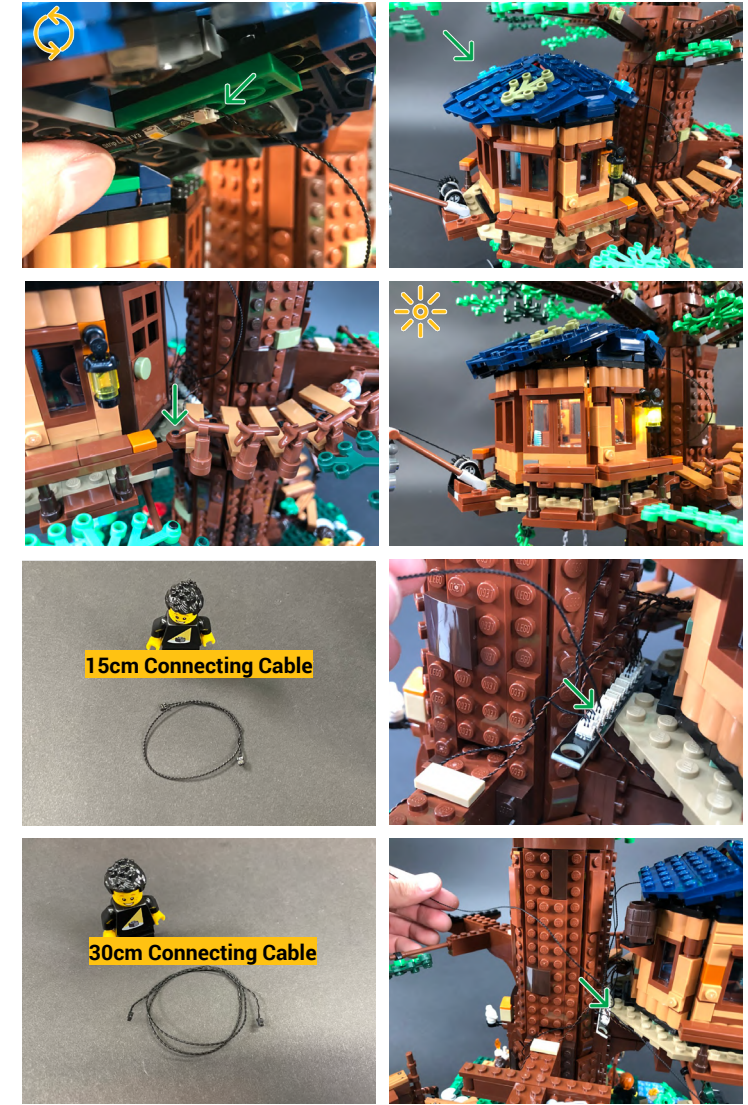
LEGEND: | DISCONNECT | CONNECT / RECONNECT | TURN / FLIP | DIRECTIONAL | TWIST / BRAID | POWER ON / TEST

15



15cm Connecting Cable from step 13

16



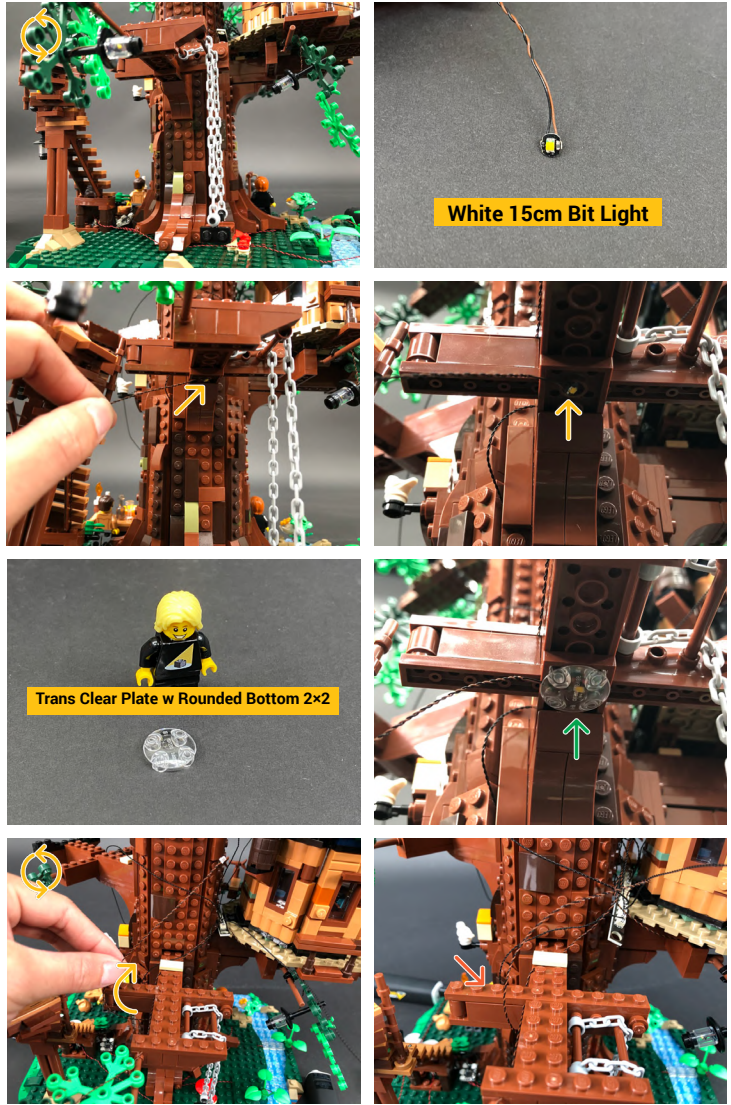
15cm Connecting Cable

30cm Connecting Cable

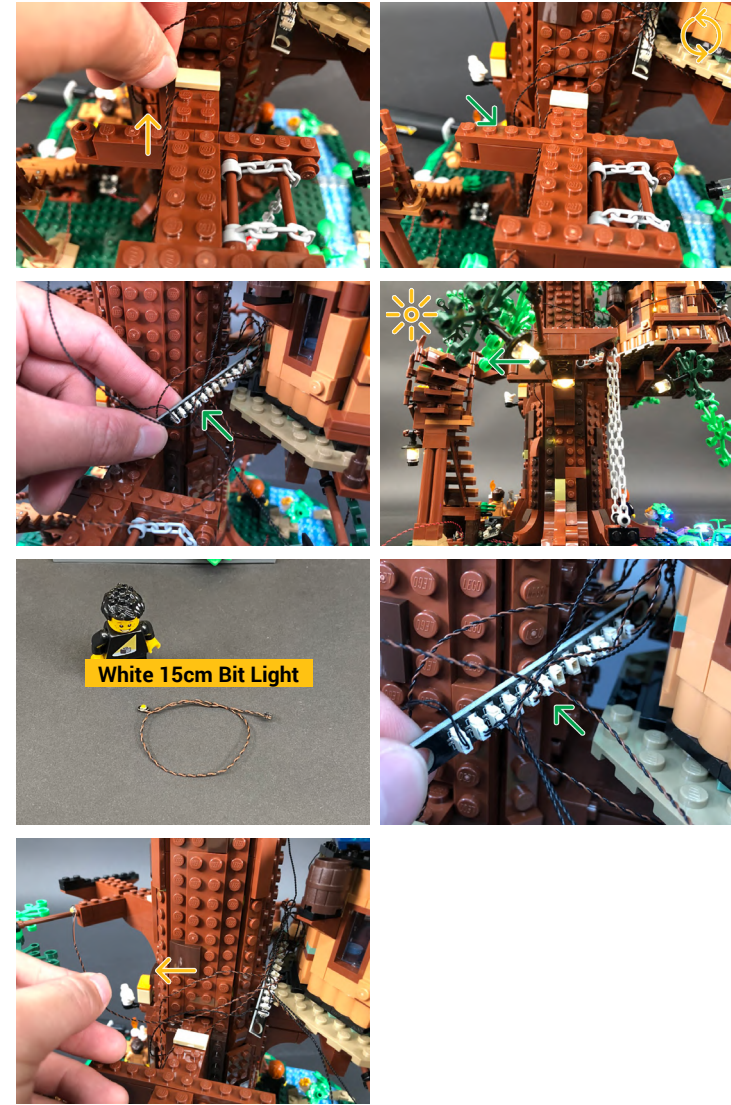
If you experience any issues with the lights not working and suspect an issue with a component, please try a different port on the expansion board to verify where the fault lies (with the light or expansion board). To correct any issues with expansion board ports, please view the section addressing expansion board issues on our online troubleshooting guide.

LEGEND: | ← DISCONNECT | → CONNECT / RECONNECT | ↻ TURN / FLIP | → DIRECTIONAL | ↻ TWIST / BRAID | ☀ POWER ON / TEST

17



18



If you experience any issues with the lights not working and suspect an issue with a component, please try a different port on the expansion board to verify where the fault lies (with the light or expansion board). To correct any issues with expansion board ports, please view the section addressing expansion board issues on our online troubleshooting guide.



19



White 15cm Bit Light

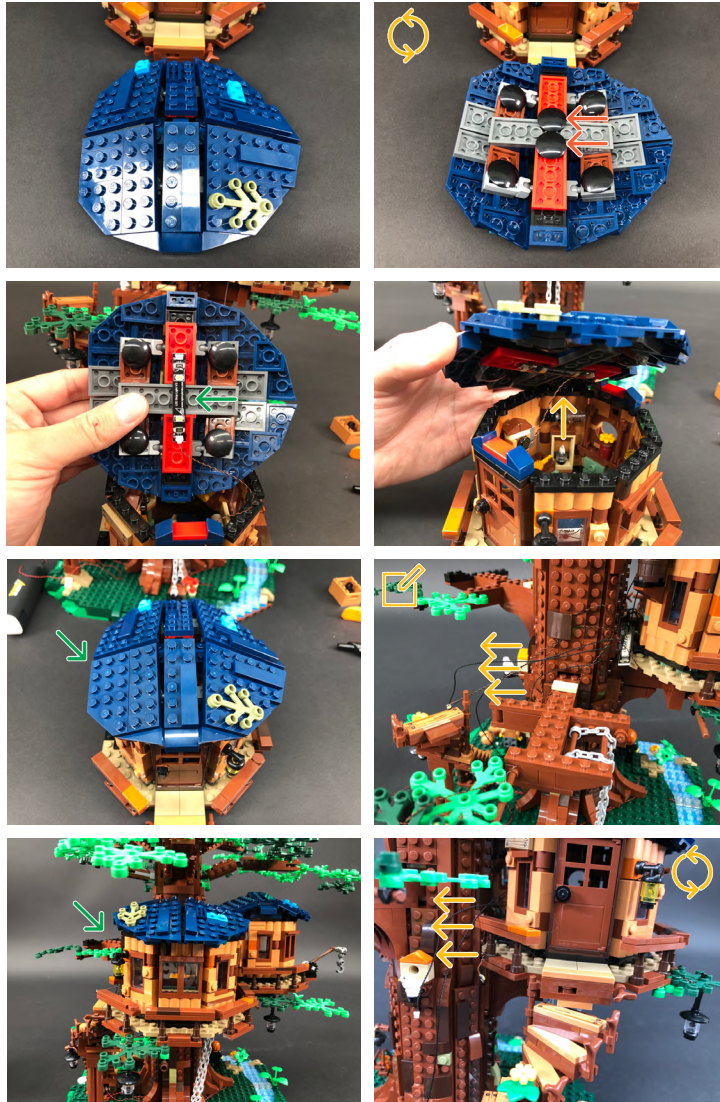


Warm White Strip Light

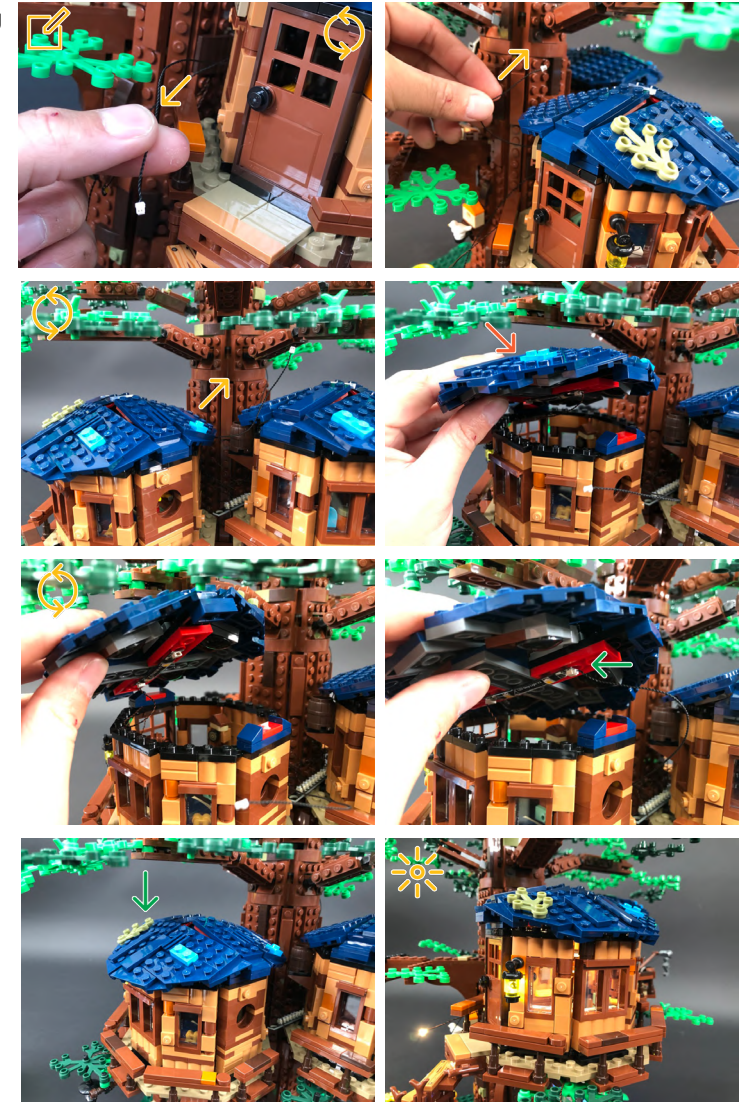
LEGEND: | DISCONNECT | CONNECT / RECONNECT | TURN / FLIP | DIRECTIONAL | TWIST / BRAID | POWER ON / TEST

20

Connecting Cables from step 16 and Bit Light from Step 18




15cm Connecting Cable from step 16



If you experience any issues with the lights not working and suspect an issue with a component, please try a different port on the expansion board to verify where the fault lies (with the light or expansion board). To correct any issues with expansion board ports, please view the section addressing expansion board issues on our online troubleshooting guide.

21

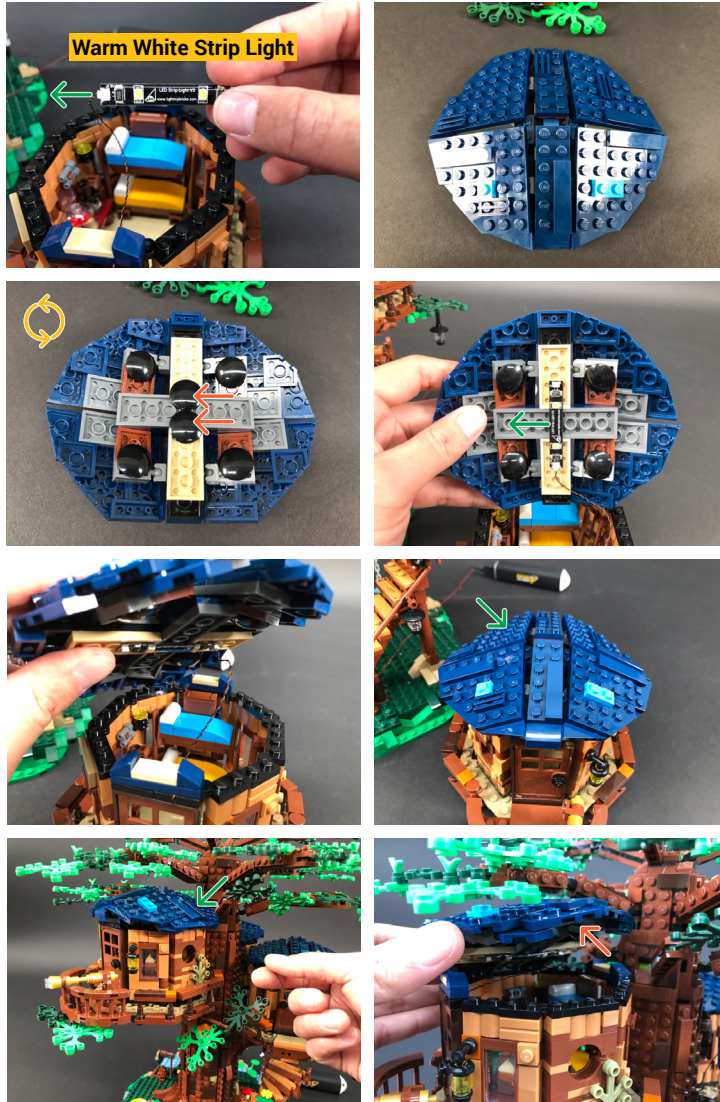
 30m Connecting Cable from step 16



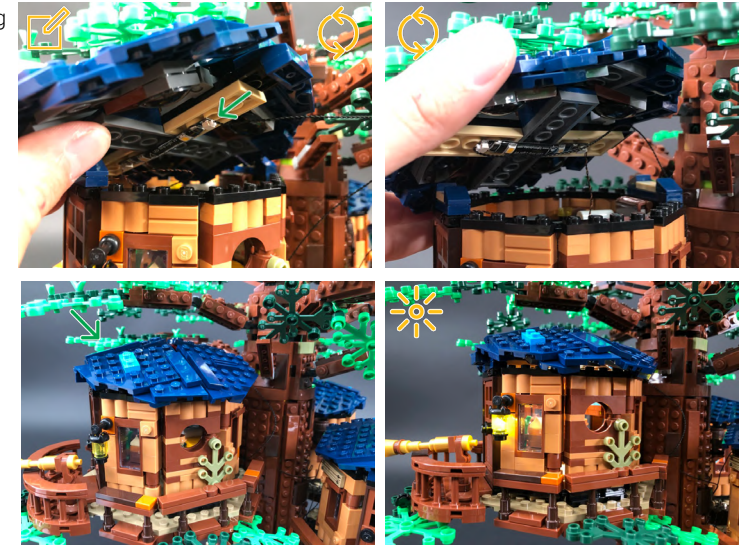
LEGEND:  DISCONNECT |  CONNECT / RECONNECT |  TURN / FLIP |  DIRECTIONAL |  TWIST / BRAID |  POWER ON / TEST

LEGEND: | DISCONNECT | CONNECT / RECONNECT | TURN / FLIP | DIRECTIONAL | TWIST / BRAID | POWER ON / TEST

22



30m Connecting Cable from step 16



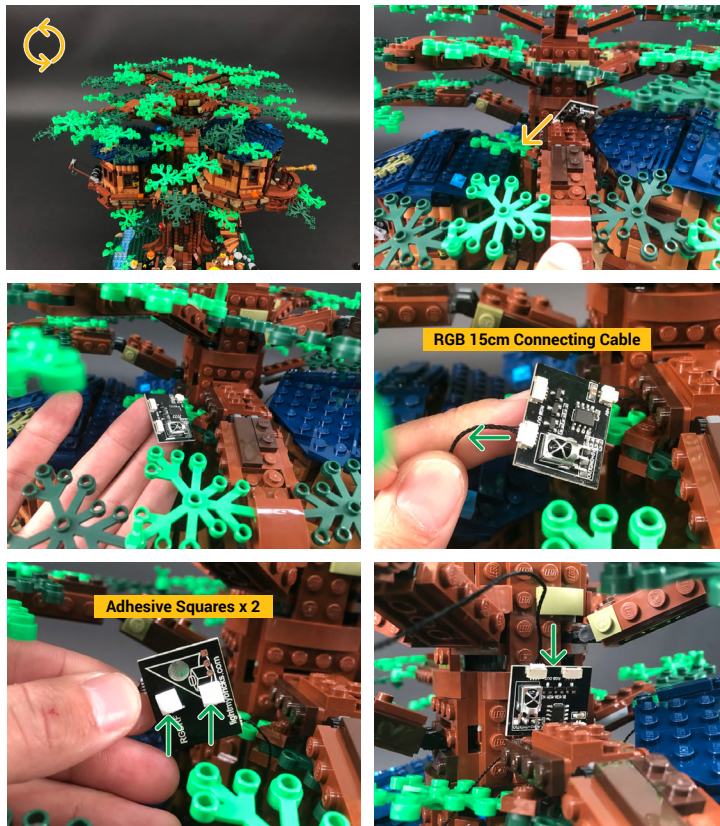
23

White 15cm Bit Light from step 18

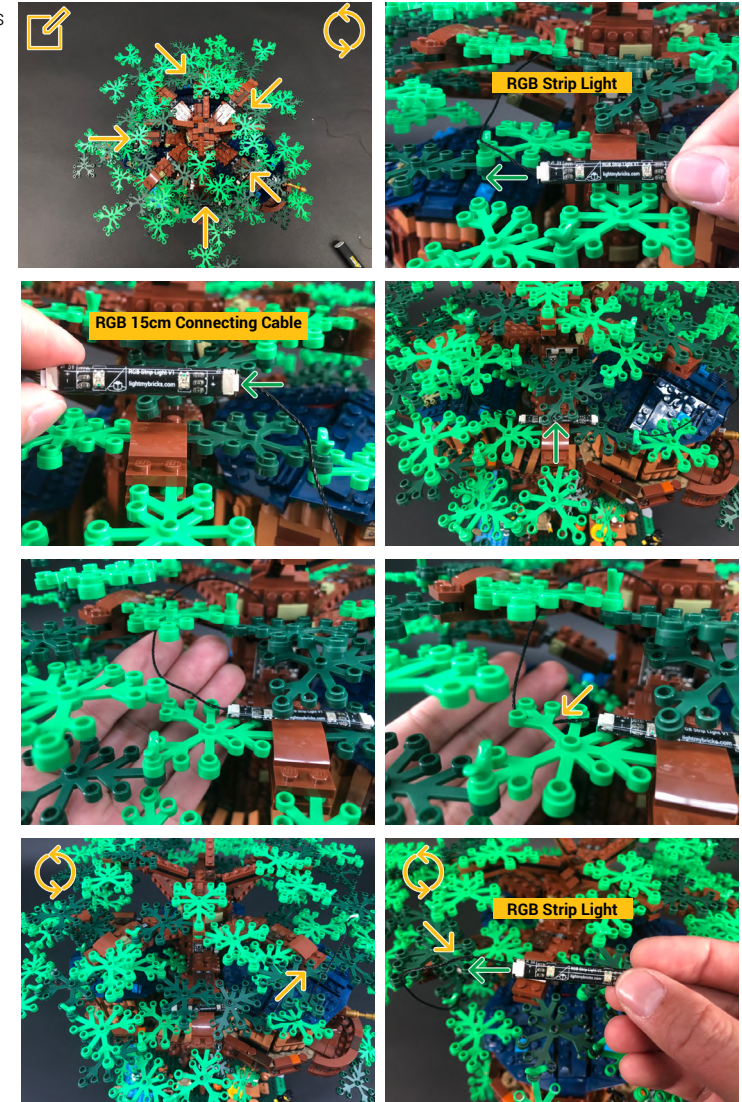


If you experience any issues with the lights not working and suspect an issue with a component, please try a different port on the expansion board to verify where the fault lies (with the light or expansion board). To correct any issues with expansion board ports, please view the section addressing expansion board issues on our online troubleshooting guide.

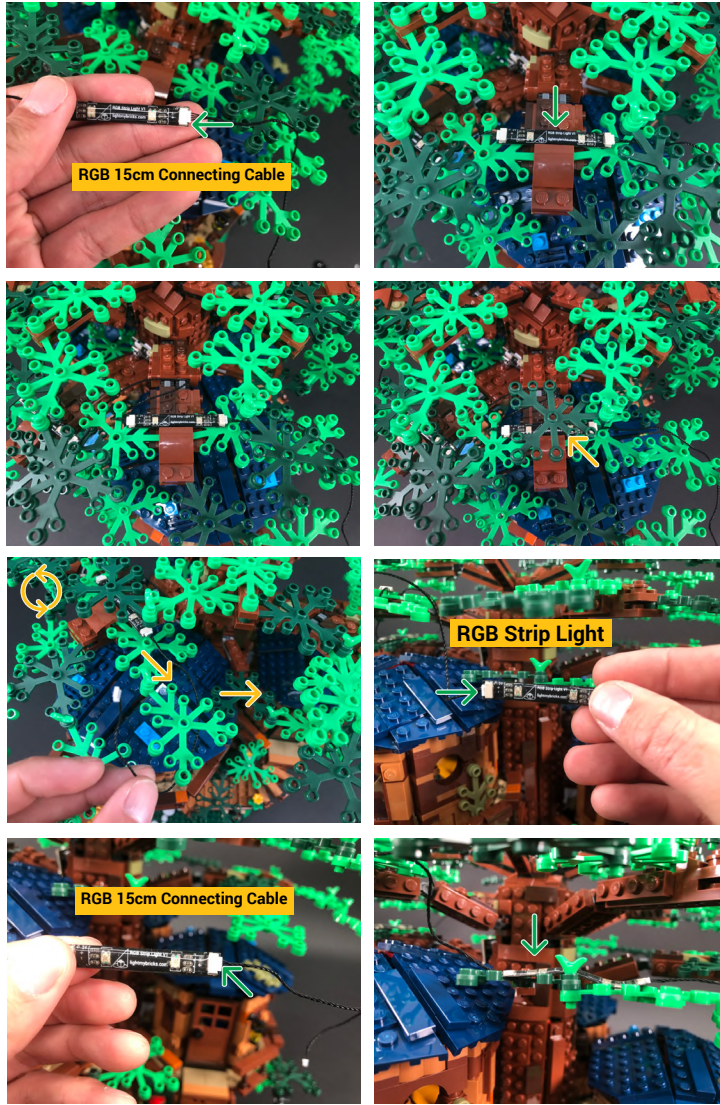
24



 RGB Strip Lights will be mounted to the following positions



25

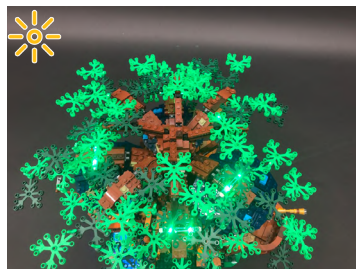


26



LEGEND: | DISCONNECT | CONNECT / RECONNECT | TURN / FLIP | DIRECTIONAL | TWIST / BRAID | POWER ON / TEST

27



28



The RGB lights are powered off by default, even when the other Tree House lights have been turned on.

To control the RGB lights, point the front of the remote control directly toward the RGB Control Board (we mounted at the front side of the tree) and turn the lights on via the ON button. Choose your desired colour by pressing any of the coloured buttons. You can also control the brightness as well as choose from one of the following effects:

- Flash** – Flash effect on your chosen colour
- Strobe** – Will flash quickly while cycling through all the colours
- Fade** – Will cycle through all the colours 3 seconds at each colour
- Smooth** – Will cycle through all the colours 7 seconds at each colour

If you experience any issues with the lights not working and suspect an issue with a component, please try a different port on the expansion board to verify where the fault lies (with the light or expansion board). To correct any issues with expansion board ports, please view the section addressing expansion board issues on our online troubleshooting guide.

Final product

This finally completes installation of the Light My Bricks Tree House 21318 Light Kit





TROUBLESHOOTING

Light My Bricks lighting kits contain individual components that are very small and can be easily damaged if not handled correctly.

To prevent unnecessary damage to components, we highly recommend that the User Guide section, **“Important things to note”** is read carefully. Follow the handling procedures in the User Guide to help prevent faults and damages to your Light My Bricks components.

If you are experiencing issues with your Light My Bricks set, watch our troubleshooting video or read on for a list of common causes to help you troubleshoot.



Wenn Sie Probleme mit Ihrem Light My Bricks-Set haben, sehen Sie sich unser Video zur Fehlerbehebung an oder lesen Sie die Auflistung der häufigsten Ursachen, die Ihnen bei der Fehlersuche helfen hier.



Si vous rencontrez des problèmes avec votre kit Light My Bricks, regardez notre vidéo de dépannage ou consultez la liste des causes les plus fréquentes pour vous aider à les résoudre ici.



Se si verificano problemi con il set Light My Bricks, guardare il nostro video per la risoluzione dei problemi o leggere l'elenco delle cause più comuni per la risoluzione dei problemi qui.

Troubleshooting

Firstly, ensure that the batteries have power using a battery charge gauge.

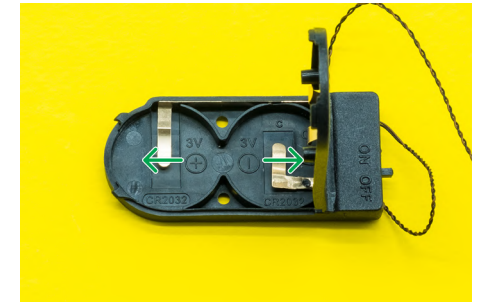
If the batteries have no power, replace the batteries.

If the batteries still have power, check to see if the batteries have been inserted correctly into the battery pack.

CHECK FOR CR2032 BATTERIES USING THE FLAT BATTERY PACK

Inside the battery pack is a symbol indicating which side the (round) CR2032 battery should be inserted. Check that the "+" side of the battery pack has the battery with the "+" symbol facing downwards.

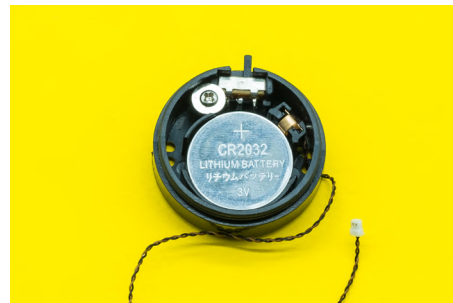
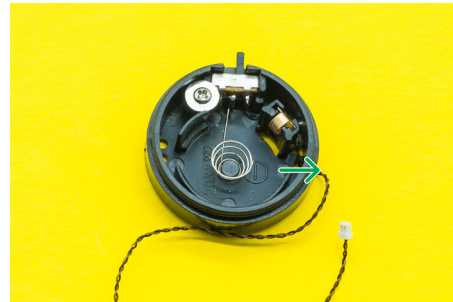
On the opposite side, the "-" side of the battery pack should have the battery flipped upside down, that is the "+" symbol facing upwards.



Troubleshooting

CHECK FOR CR2032 BATTERIES USING THE ROUND BATTERY PACK

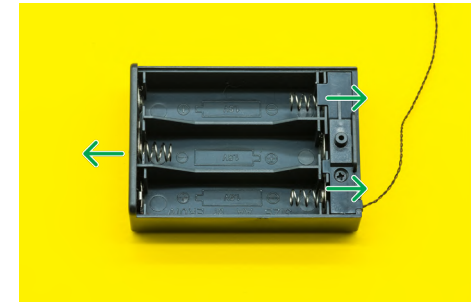
Inside the battery pack is a symbol indicating which side the (round) CR2032 battery should be inserted. In this case, for the stacked battery pack, ensure that BOTH batteries have the "+" symbol facing upwards.



CHECK FOR AA BATTERIES USING THE AA BATTERY PACK

Inside the battery pack are symbols indicating which direction the AA battery should be inserted. The flat side of the battery should be paired with the spring side of the battery pack.

If the batteries have been installed correctly and your kit still isn't operating correctly, the next step is to check the wiring.



Troubleshooting

CHECK YOUR WIRES

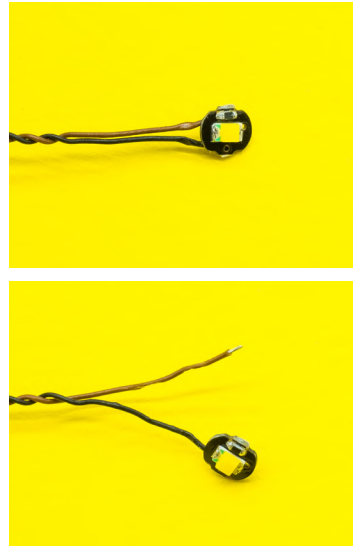
In order for Light My Bricks components to fit in between and underneath LEGO® bricks, the components need to be very small.

Due to this nature, Light My Bricks components can be easily damaged when not handled correctly.

Be careful when removing unpacked components out of the packaging and ensure not to forcibly pull at the wires as this can damage the soldering that attach the wires to the LEDs.

If the wiring is detached from the LED itself, the light will not operate.

When connecting lights to your LEGO set, check that there are no pinched wires underneath or in between bricks and plates. When the wires are pinched and the exposed wires are touching each other, this can cause a crosswire and the lights to not function correctly.

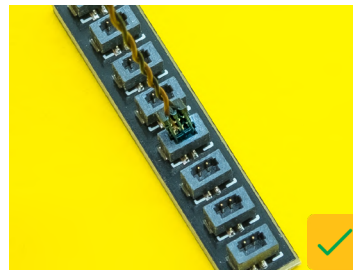
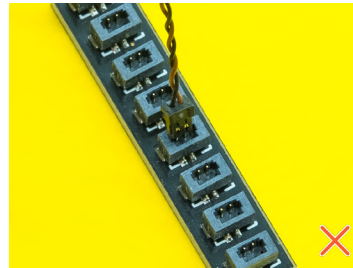


Troubleshooting

CHECK YOUR EXPANSION BOARD PORTS/ STRIP LIGHT PORTS / EFFECTS BOARD PORTS

It is important to note that connectors can only be inserted to the expansion board, strip light, or effects board ports in one direction.

Forcibly inserting connectors in the incorrect direction will result in damaging the pins inside each of the ports on your component board.

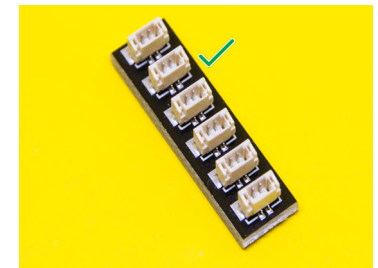
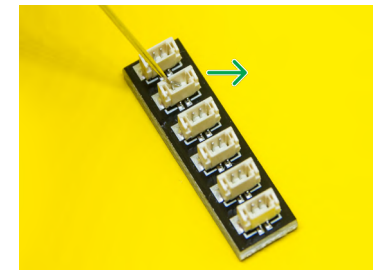
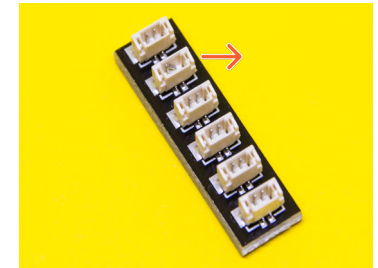


Not only will a light connected to the damaged port not work, but if the pins inside the port are bent to a point they are touching each other, this can result in all other lights in the system to stop working. This is a short circuit.

A short circuit can also result in overheating of the board, cable or batteries. If you suspect a short circuit, **DISCONNECT POWER IMMEDIATELY.** Batteries can fail, catch fire, or even explode if left connected to a short circuit for too long.

If you suspect you have a faulty component due to a bent pin, try the following steps:

If you look carefully inside each of the ports, each port contains 2 small pins that should be straight. You will be able to identify a faulty port if it has any bent pins.

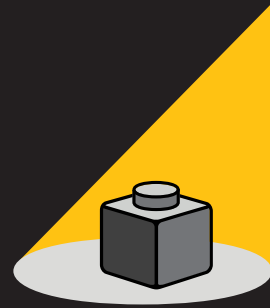


Contact Us

If you have an enquiry regarding the online shop, our products or a general enquiry please refer to our Frequently Asked Questions webpage here.

Alternatively, you can contact our Customer Services team by completing the form here, or email us at info@lightmybricks.com

We thank you for purchasing this product and hope you enjoy!



**LIGHT MY
BRICKS**

lightmybricks.com
